



**UNIQUE SPM**

Solution and Engineering



**WITH EXPERIENCE  
WITH EXPERTISE**

An ISO 9001:2008  
Certified Company

# OUR STORY

We, Unique SPM Solutions and Engineering incorporated in the year 2008 as a leading ISO-9001-2008 URS & NABCB Certified Company engaged in manufacturing varied range of Hydraulic products including:



We are based in Ghaziabad a prominent city of NCR. Within a limited time span, we have been able to attain a commendable reputation in the industry by offering products of unparalleled quality and functionality. We also offer after sales support services to our customers that are appreciated for our reliability and efficiency.

- **Broaching Machines**
- **Notching Machines**
- **Hydraulic Presses**
- **Powder Compacting Machine**
- **Hydraulic Cylinders**
- **Hydraulic Power Packs**
- **Hydraulic Accessories**

## **COMPLETE CLIENT CENTRIC APPROACH**

We are engaged in Designing, Manufacturing installations and Commissioning of Hydraulics and Pneumatics SPM Machines and Fixtures for various applications.





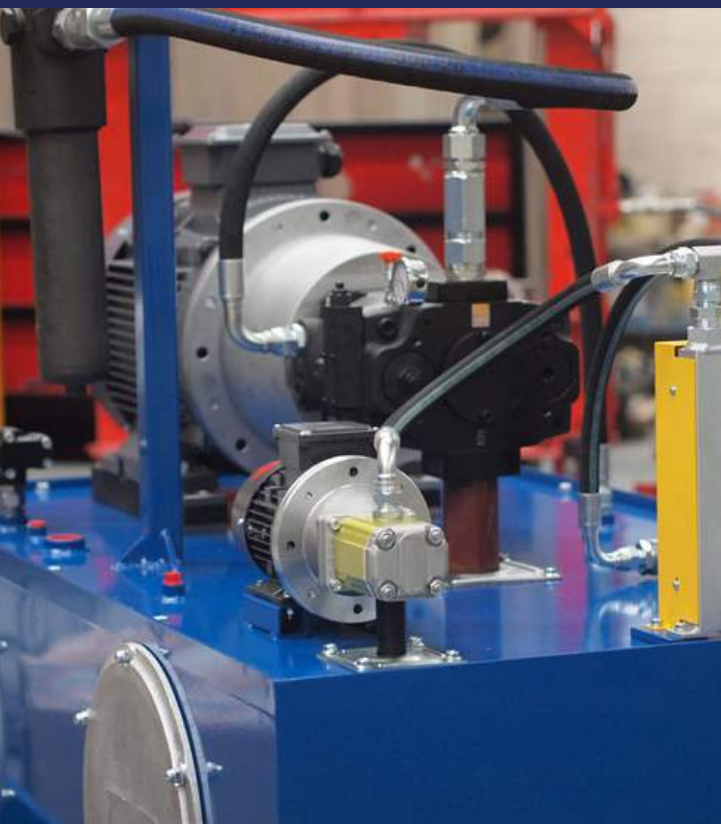
## INFRASTRUCTURE AND FACILITIES

We are located 25 KM from National Capital, Delhi at SSGT Road Industrial Area Ghaziabad at UPSIDC Industrial Land having a plot of 1000 sq.mtr equipped with 30kw DG set and other necessary plant and machineries of reputed make, Testing and Inspection Instruments also from reputed makes, are also available in our facilities.



## OUR VISION

**To be the first choice of our customers in the world of Broaching and Hydraulic Presses by offering the best Engineering Solutions to all to meet their needs and to emerge as a Demanded and Reputed Brand for our range of Products Globally.**



## QUALITY POLICY

We believe in customers delight. We undergo strong inspection, checking and testing of the machine at different stages so that we end up with quality desired product ready for dispatch. We have a strong team of design and development professionals to understand the customers need and accordingly work on it.

**Our team has worked with 100+ clients all across the country belonging to different industries from Defense and Automobile to Aluminum and Forging.**



INDUSTRIES  
WE SERVE

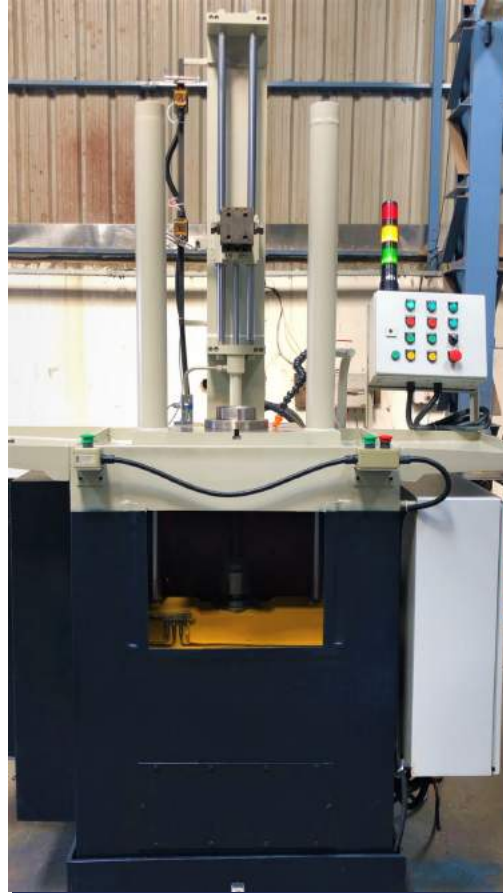


# BROACHING MACHINES

High productivity and precision components is the need of the hour. Broaching is the most simple and highly productive Metal cutting technology process.

**We offer Broaching Machines with option of auto loading-unloading facility.**

Roughing, Semi Finishing and Finishing of the components is done in just unit pass seconds. Majorly used for internal broaching of gears, internal splines, key-way, bore, routers, couplings, grooves, specific profiles, sprockets, levers, etc.



## VERTICAL AND HORIZONTAL BROACHING MACHINE

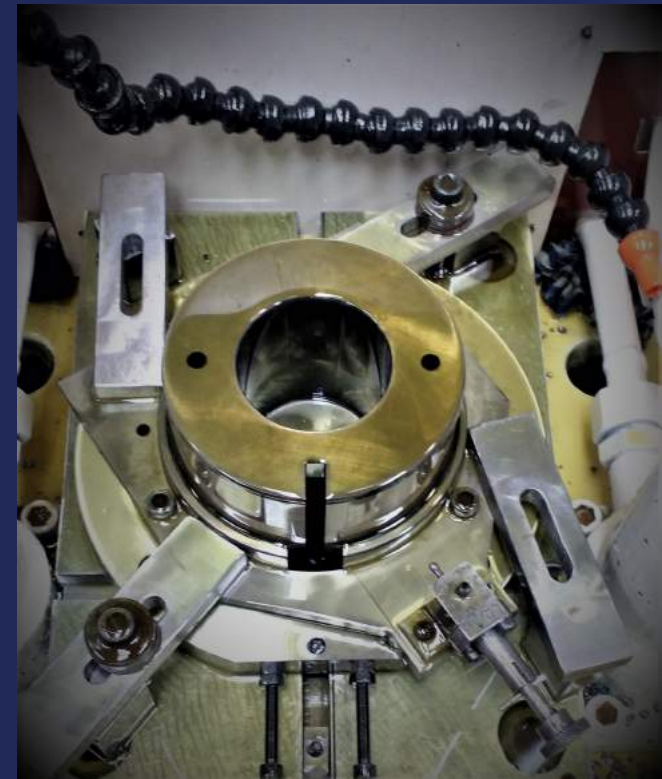
Generally used for two wheeler and four wheeler segments for internal and external Broaching Operations.

**Max. Pulling Force- 3-63 Tons**  
**Max. Stroke- 600mm-2500mm**  
**Cutting Speed- 2-6m/min.**  
**Return Speed- 12-14m/min.**

## TABLE - UP BROACHING MACHINE

These Machines completely remove the need of Pits or Elevated Operator Platform for installation. Table Up Broaching Machines offer highest precision for Mass Production.

**Max. Pulling Force- 3-25 Tons**  
**Max. Stroke- 600mm-2500mm**



# **SURFACE BROACHING MACHINE**



Generally used for Automotive and Heavy Engineering industries for broaching of external surfaces like matching surfaces of connecting rods, steering racks, etc.

**Capacity-6-50 Tons**

**Max. Stroke- 600mm-2500mm**

**Cutting Speed- 2-6m/min.**

**Return Speed- 12-14m/min.**

## **U-NOTCH & V-NOTCH BROACHING MACHINE**

Notch Broaching Machine can notch correct 'V' / 'U' notches in Charpy or Izod specimen by means of multi-toothed broach, Easy operation, high efficiency. One cut action can notch two specimens.

**Capacity-6-50 Tons**

**Max. Stroke- 300mm-1000mm**

**Cutting Speed- 2-6mmin.**

**Return Speed- 12-14m/min.**





# HYDRAULIC PRESS

Our Presses are Robust in Design and Rigid in Structure. We Manufacture Custom Built Presses of High Standards and Efficiency. We can fully automate your assembly line with ancillary equipment including conveyors, cameras, RFID scanners, dispensing systems, tool storage and retrieval systems, quick die change options, and robots.



## C-Frame

C-frame presses deliver high force while maintaining a small compact footprint. These presses offer a larger die space area and Operating volume. Commonly referred to as Gap Frame

**Capacity- 3-300 Ton**

**Ram Stroke- 100-800mm**

**Day Light-200-1200mm**

**Speed- Forward/Pressing,  
Return Manual/Auto Lyching**



**We have been able  
earn the trust of  
our clients in  
manufacturing the  
best Hydraulic  
Press for all  
industries.**



## H-FRAME

Applies special loop for high speed and safety. Precise and easy to handle with efficiency.

**Capacity- 25-750 Ton**

**Stroke- 600-1200mm**

**Day Light- 800-1600mm**

**Speeds-**

**Forward/Pressing/Return**



## Powder Compacting Presses

Hot pressing is a high-pressure, low-strain-rate powder metallurgy process for forming of a powder or powder compact at a temperature high enough to induce sintering and creep processes.

This is achieved by the simultaneous application of heat and pressure. We manufacture Specially made Presses for Explosive Materials for the Defense and Aerospace Sectors.

**Capacity- 25-500 Ton**

## 4-PILLAR PRESS

Used for Deep Drawing, Moulding, Forming, Punching, Coining, Riveting, Caulking, Tile Making, Compacting, & variety of operations with sophisticated and costly dies for kitchen ware, light fittings, sanitary fittings, automobiles and ceramic industry.

**Capacity-5-1000Ton**

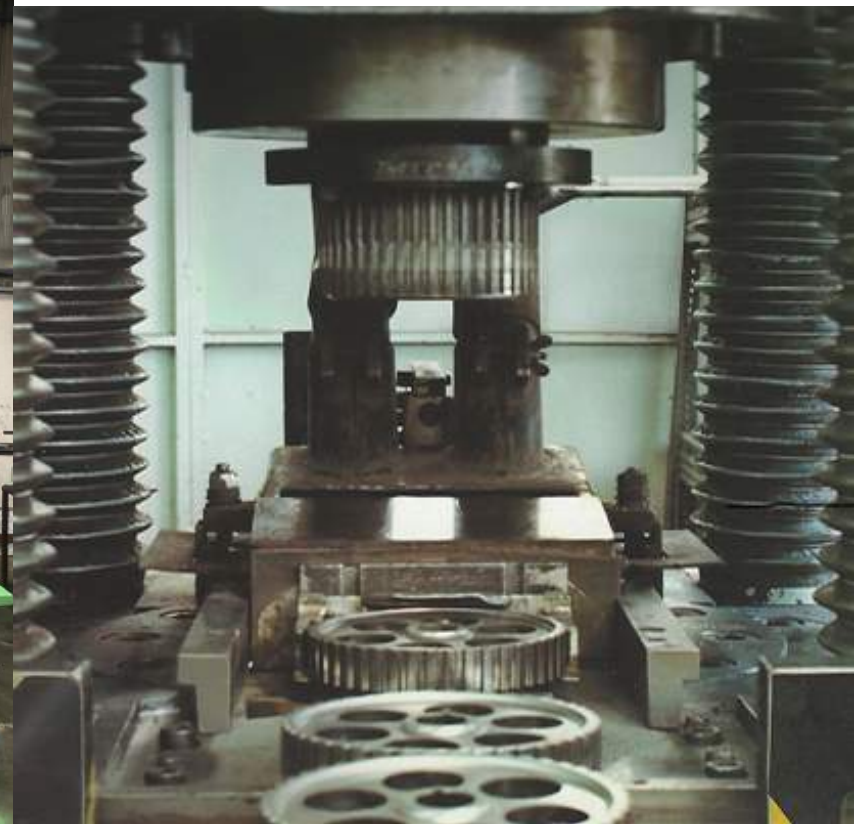
**Stroke-100-800mm**

**Day Light- 200-1600mm**

**Speeds-**

**Forward/Pressing/Return**

**Manual/Auto Lyching**





# Gib Guided Presses

Gibs are press components that guide the reciprocating motion of the ram to maintain superior squareness and parallelism throughout the stroke

**Capacity- 25-1500 Ton**

**Stroke- 600-1200mm**

**Day Light- 800-1600mm**

**Speeds- Forward/Pressing/Return**



# Compression & Hot Moulding Presses

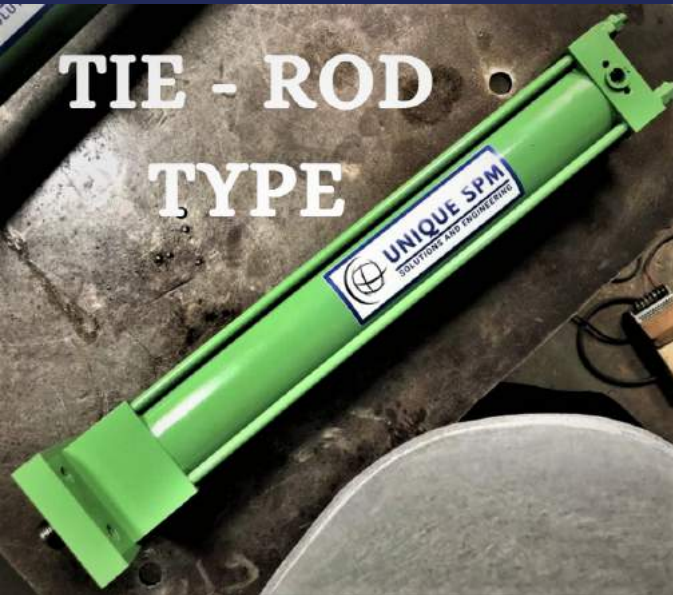
The material is placed in a hot mold, and the mold is closed by a hydraulic press. A typical compression molding process is performed at a mold temperature of 350°F and mold pressure of 100 psi (180°C and 700 kPa) with curing time of 3 min.

**Capacity-5-1000Ton**



# HYDRAULIC CYLINDERS

With Experience With Expertise



**Both Welded and tie rod type constructions**



## MANUFACTURING STANDARDS

- Lathe and Shaper Machines along with CAD CAM facilities
- High quality Honing, Grinding and welding machines
- Lean manufacturing techniques
- Demand flow and Continuous flow Manufacturing Techniques



# INDUSTRIAL HYDRAULIC CYLINDERS



**Single Acting  
and  
Double Acting**



Available in different  
mounting styles  
depending on  
application.

Cylinder specification  
range from-

- Bore- 25mm-500mm
- Stroke- 25mm-8000mm
- Piston Rod- 6mm-350mm
- Working Pressure- up to  
450 Bar





# INDUSTRIAL HYDRAULIC POWER SYSTEMS



Used to generate pressure with the help of fluid for actuating- Hyd. Cylinder, Hydromotors, etc., Injection Moulding, Pressure Die Casting, Grinding, Forklifts, Cranes, Lifters, Furnaces, Jacks, etc. We have a well trained team for Designing and Manufacturing such Systems.

## **Capacity**

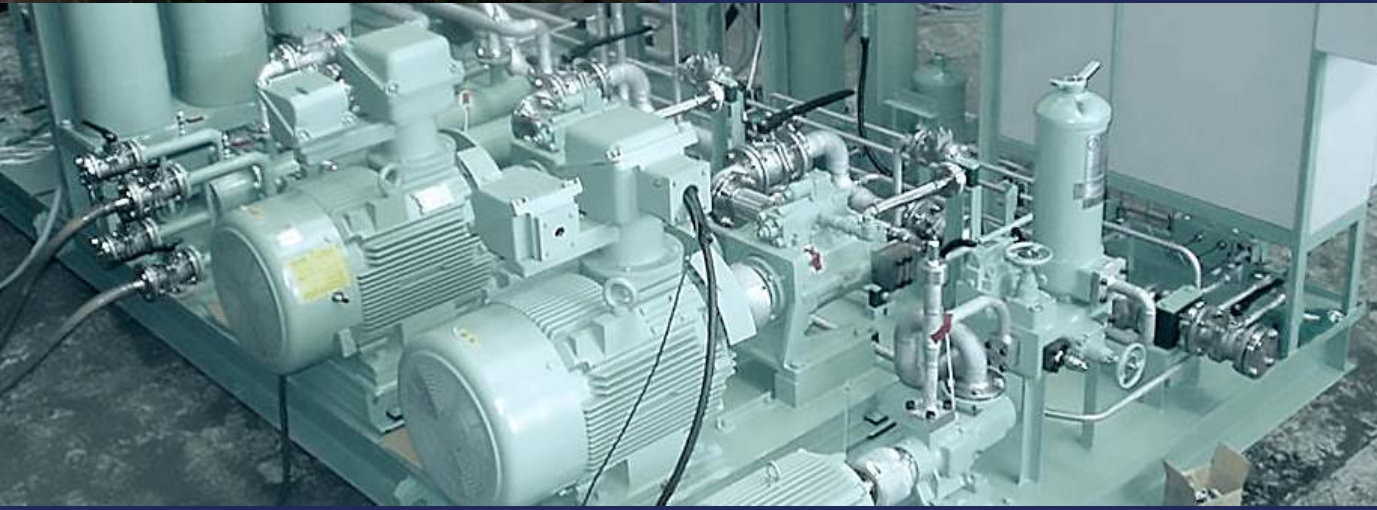
**Flow- 1LPM to 300LPM**

**Pressure- Up to 350 Bar.**

**Tank Capacity- 25Ltr - 5000Ltr**

**Supply Voltage- 24VDC/220VAC**

**Electric Motor- 5HP-200HP**

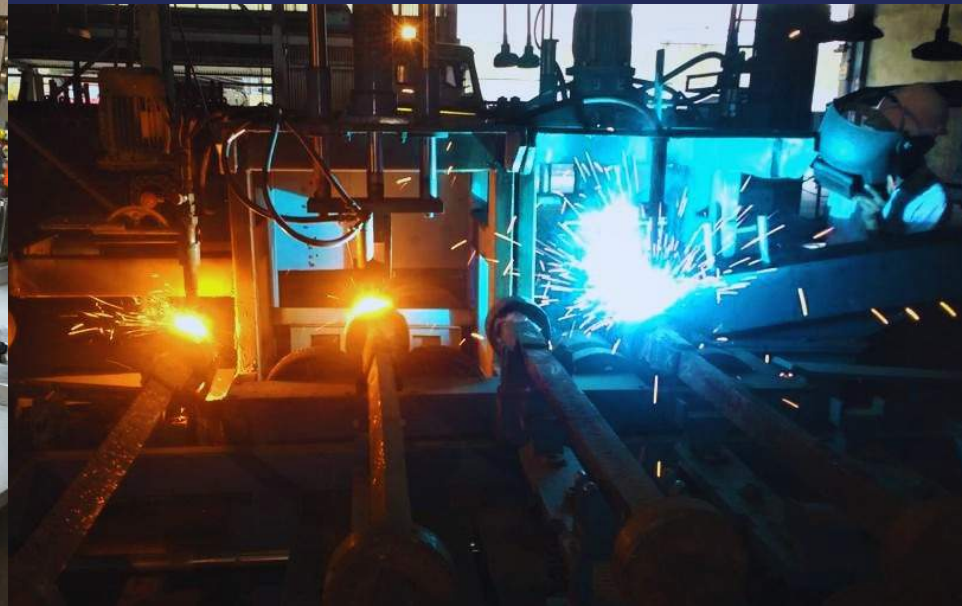




# Special Purpose Machines & Automation

Industrial automation in manufacturing is the use of “intelligent” machines in factories so that manufacturing processes can be carried out with minimal human intervention. In our case it involves the application of various control systems to enable the Component to carry out on their own, with little human intervention, tasks that require speed, endurance and precision like Broaching and Presses. We can fully automate your assembly line with ancillary equipment including conveyors, cameras, RFID scanners, dispensing systems, tool storage and retrieval systems, quick die change options, and robots.

## Industry 4.0



# SOME OF OUR ESTEEMED CLIENTS



## UNIQUE SPM

Solution and Engineering

Location- Plot no. 161&162, Amrit Steel Compound, South side GT Road, Industrial Area, Ghaziabad-201009, (UP), India.

Mobile No.- +91-9718172172

Email: sales@uniquespm.com

Web: www.uniquespm.com